

FLORIDA WEST COAST BROMELIAD SOCIETY NEWSLETTER

December 2011



NEXT MEETING

Date: Tuesday, December 6, 2011
Location: Hope Presbyterian Church
1698 South Belcher Road
Clearwater, Florida 33764
Time: Doors open at 7 pm; meeting starts at 7:30

Holiday Party Program

For the December gathering there will be no business meeting, speaker, general raffle table, or friendship plant table. What we will have is our annual Holiday Party for members and their guests. As part of the celebration, each member present will receive a free pup and have the chance to win one of a number of prize plants supplied by some of our grower members. Be SURE to wear your nametag to be eligible for these prizes.

In addition, there will be a Gift Plant Swap and a Special Raffle for members and guests alike. For the Gift Swap, people can bring a plant (a nice plant that you would like to receive as a gift) and swap it for a plant someone else has brought to exchange. The Special Raffle is a chance to win one or more exceptional plant(s) worth much more than the price of a handful of raffle tickets.

Party Refreshments

To add to the party atmosphere, we will also have great food in large amounts. Members bring their favorite dishes to share, which are supplemented by festive food platters purchased for the event.

Member Service Recognition Award

During the meeting/party, the FWCBS Board of Directors will announce the name of a member, past or present, to be honored for their service in advancing the aims of the Society. The names of members so honored are added to a plaque that is on a boulder next to the FWCBS bench at the Florida Botanical Gardens.

LAST MEETING HIGHLIGHTS

Program

In his talk, *Protecting Your Bromeliads in a Winter from Hell*, Alton provided useful pointers for protecting plants in unseasonably cold weather and he had examples of the supplies he suggested for use in protecting plants.

Before the start of **Alton Lee's** presentation, Kathy Risley presented him a *Neo*. 'Stephen Littlefield' (pictured on the right) that was hybridized by Dennis Cathcart and named for her husband Steve.



Below are some highlights of the talk:

- Be alert to approaching cold weather systems and how they impact weather conditions in your immediate area. Typically, weather forecasts are made based on conditions at locations such as the nearest airport, and they can be vastly different from your location.
- After a front moves through, the coldest part of the day is typically just before dawn and on the second day and night.

- While plants do not feel a wind chill the same way people do, wind can increase moisture evaporation from plant surfaces and soil, which reduces water available to the plants.
- Since colder weather typically moves in from the northwest, unshielded plants on the northern and western sides of a property would likely be more impacted by the cold than those in other locations.
- Monitor microclimates in the various areas around your property with any one of a variety of thermometers. One type especially effective and easy to use is a digital thermometer that measures and records both the minimum and maximum temperatures within a 24-hour period and transmits the information to a receiver inside the house. This type of thermometer can be purchased for around \$20. For a more accurate measurement, from the plant's point of view, place thermometers close to the ground, at plant height.
- For outside plants that are mobile, move them to a warmer spot, such as inside the house, a garage, or a shade house (if you have one). Inside is all right for short periods of time but if cold lingers, plants will need a light source, moisture, and good air circulation and, in a garage, a heat source. To supplement light, use an electric shop light; to add moisture to the air, water the plants directly or place water in open containers among the plants; and for heat, use small heat lamps and/or strings of holiday lights.
- To protect plants in the landscape, cover them with proper materials such as frost cloth, sheets, towels, and/or plastic. (Caution: don't let plastic covers touch plants). Secure covers so wind and cold do not get under them and they do not blow away. For anchors, use items readily available around the house such as bricks, rocks, paint cans, and anchors for camping tents. Holiday lights placed under the covers can also be used as a heat source.
- If the day turns hot and/or rainy, remove covers, other than frost cloth which breathes, is fast drying, and admits filtered sun.
- If time and resources are limited, prioritize which plants you want most to survive. Consider how easy it would be to replace them, the cost to replace them, and how much you like them.
- Supplies need not be expensive. Many can be found at thrift shops and garage sales, and most can be used around the house for other purposes.
- After cold weather, be patient with plants that appear damaged because they might rebound in the spring or summer. And even if they do not look good, they could still produce pups. If the center of the plant comes loose, it might still give pups, so remove the center, dust the plant with a fungicide, and leave it alone.
- For lists of plants that are cold tolerant or cold sensitive, go to fcbs.org.

Election of Officers and Trustee for 2012

Members elected the following for next year's nine-member Board of Directors:

President	Kathy Risley	Treasurer	Brian Corey
Vice President	Susan Sousa	Trustee	Barret Bassick, three-year term
Secretary	Suzanne Bogacki		

Two other positions on the Board are held by Trustees who are returning to the Board to serve out their remaining time in their three-year terms: Judy Lund who has two years left in her term and Gary Lund who has one year left. The other two positions on the Board are Immediate Past President, Bob Herberich, and Newsletter Editor, Linda Sheetz.

Show and Tell

Mary Sue Beeler
Ashley Graham
Patty McCloskey
Chris Kennedy
Linda Sheetz

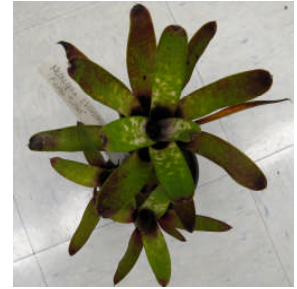
Aec. 'Bert'
Aec. 'Red Flamingo'
Neo. 'Marble Throat', cv of *chlorosticta*, Neo. 'Zoe', *Bil.* (unknown hybrid)
Terrarium with bromeliads and frog
Neo. 'Sibella' (Bullis hybrid)



Aec. 'Red Flamingo'



Neo. 'Sibella'



↑ Neo. 'Marble Throat' ↓



THIS AND THAT

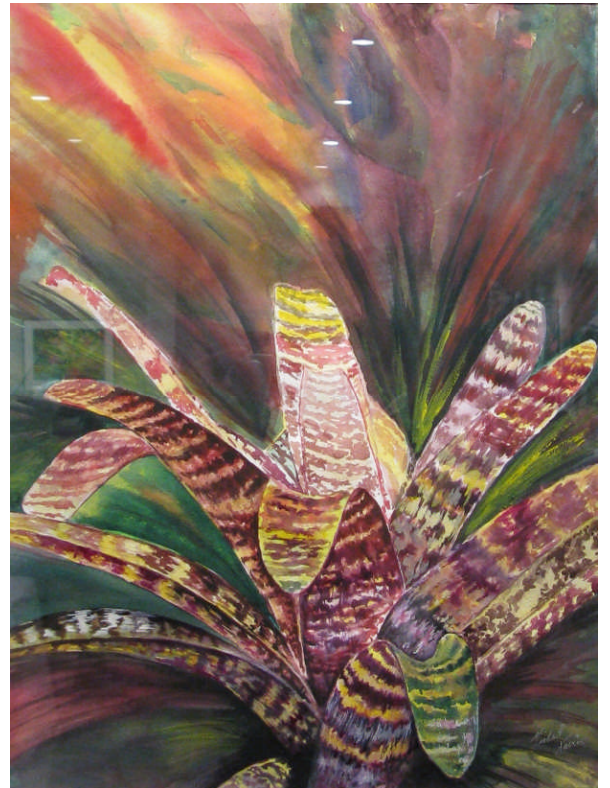
Bromeliad Extravaganza® 2011, November 4-5



THE ART OF BROMELIADS
2011 BROMELIAD EXTRAVAGANZA
NOVEMBER 4 - 5

With 27 FWCBS members attending the recent Bromeliad Extravaganza®, *The Art of Bromeliads*, in Daytona Beach, our Society was well represented. The event was hosted by the Florida East Coast Bromeliad Society and sponsored by the Florida Council of Bromeliad Societies (FCBS). The Friday night reception at the Peabody Auditorium was a nice touch, and provided attendees the opportunity to mingle, eat ice cream and other desserts, and take a look at about three dozen pieces of bromeliad art exhibited there. All of the pieces were also available for purchase. Below are pictures of some of the art.





Saturday was a busy and event-packed day. It started with the bromeliad sales where there were 27 plant and art vendors, seven of whom were FWCBS members: Marty Baxley, Dennis Cathcart, Randy Garcia, Michael Kiehl, Steve Littlefield, Bob Powell, and David Smith.



David Smith, and in the background on the right, Michael Kiehl, at their booths in the sales area.

When people wanted a break from buying plants, they strolled through the International Cryptanthus Show and in the afternoon attended educational seminars presented by four speakers: Terrie Bert, Dean Fairchild, Carole Richtmyer, and Tom Wolfe. There were hourly raffles throughout the day for assorted gift baskets and Judy Lund won a tidy sum of money in a special 50-50 Raffle, where she received half of the raffle pot. The Rare Plant Auction after the Saturday night banquet provided the opportunity to acquire some less common bromeliads. Below are pictures of some of our members who were there.



Barbara Gardner



Barret and Gwen Bassick



Bob Powell



Cindy Redmond



Dick and Nancy Dailey



David Smith



Maria Fernandez



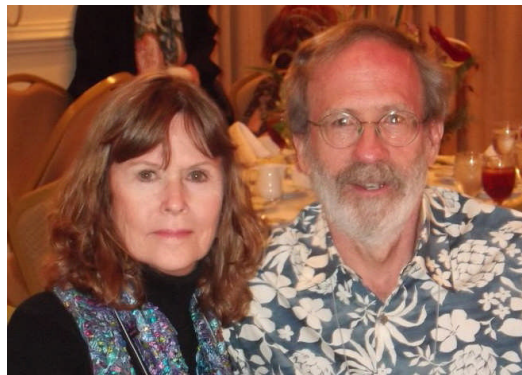
Linda and Dennis Cathcart



Pat Frey



Marty Baxley



Linda Sheetz & Brian Corey



Michael Kiehl



Kathy Risley & Steve Littlefield



Kay & Mike Petryszak

(NOTE: Randy and Denise Garcia were unavailable for a photo).



John & Janet Bankhead



Judy & Gary Lund



Nicole Matwijczyk

New Members

Please welcome new members Mary Sue Beeler, who joined the FWCBS at the October meeting, and Chris Kennedy, Joseph White, and Karen McDermott-White, who joined at the November meeting.

Frost Cloth

Maria Fernandez has ordered frost cloth for members who want to have it on hand this winter. She will have the cloth available for pick up at the December meeting. We thank her for undertaking this task.

UPCOMING EVENTS, 2012

March 24-25, GreenFest Plant Sale

University of Tampa, Tampa, FL (tampagreenfest.com)

April 6-8, Tropiflora Spring Festival

Tropiflora Nursery, 3530 Tallavast Road, Sarasota, 941-351-2267 (tropiflora.com)

April 14-15, USF Botanical Gardens Spring Plant Sale

University of South Florida, Tampa, FL (cas.usf.edu/garden)

April 28-29, Green Thumb Festival

Walter Fuller Park, St. Petersburg, FL

September 24-30, 20th World Bromeliad Conference, Orlandiana '12

Orlando, FL, USA (bsi.org/events/2012/Orlando2012)

FWCBS BOARD OF DIRECTORS

- President Kathy Risley, linocut1@tampabay.rr.com
- Vice President Marty Baxley, susiebaxley@verizon.net (Susan Sousa, 2012)
- Secretary Suzanne Bogacki, gdkeller@msn.com
- Treasurer Brian Corey, bcorey2@tampabay.rr.com
- Immediate-Past President Robert Herberich, bubbasotis@verizon.net
- Newsletter Editor Linda Sheetz, lsheetz@tampabay.rr.com
- Trustees (3) Steve Littlefield (2011), linocut1@tampabay.rr.com
Gary Lund (2010-2012), garybrom@yahoo.com
Judy Lund (2011-2013), glund@tampabay.rr.com
(Barret Bassick, 2012-2014)

Newsletter Editor, Linda Sheetz, lsheetz@tampabay.rr.com

Florida West Coast Bromeliad Society, P.O. Box 4185, Clearwater, FL 33758