



**CALOOSAHATCHEE
BROMELIAD
SOCIETY'S
CALOOSAHATCHEE
MERISTEM**

3836 Hidden Acres Circle N
North Fort Myers FL 33903
(239) 997-2237

DrLarry@COMCAST.NET

March 2009



CALOOSAHATCHEE BROMELIAD SOCIETY OFFICERS

EXECUTIVE COMMITTEE

PRESIDENT Donna Schneider (sgarydonna@aol.com)
VICE-PRESIDENT Ross Griffith
SECRETARY Luli Westra (lulidave@yahoo.com)
TREASURER Betty Ann Prevatt (bprevattpcc@aol.com)
PAST-PRESIDENT Steve Hoppin (steveandlarry@comcast.net)

STANDING COMMITTEES CHAIRPERSONS

NEWSLETTER EDITOR Larry Giroux (DrLarry@comcast.net)
FALL SALES CHAIR Brian Weber (BrianWeber1b@aol.com)
FALL SHOW CHAIR Ross Griffith
FALL SHOW Co-CHAIR Betty Ann Prevatt (bprevattpcc@aol.com)
PROGRAM CHAIRPERSON Bruce McAlpin
WORKSHOP CHAIRPERSON Steve Hoppin (steveandlarry@comcast.net)
SPECIAL PROJECTS Gail Daneman (bob@fesq.net)
CBS FCBS Rep. Vicky Chirnside (vickychirn@aol.com)
CBS FCBS Rep. Debbie Booker/Tom Foley (tefoley24@gmail.com)

OTHER COMMITTEES

AUDIO/VISUAL SETUP Bob Lura, Terri Lazar and Vicki Chirnside
DOOR PRIZE Terri Lazar (terriLML@earthlink.net)

HOSPITALITY Mary McKenzie; Sue Gordon
SPECIAL HOSPITALITY Betsy Burdette (betsy@burdetteinc.com)
RAFFLE TICKETS Greeter/Membership table volunteers - Dolly Dalton, Eleanor Kinzie, etc.

RAFFLE COMMENTARY Larry Giroux
GREETERS/ATTENDENCE Betty Ann Prevatt, Dolly Dalton (dollyd@comcast.net), Luli Westra

SHOW & TELL Dale Kammerlohr (dzdase@embarqmail.com)
FM-LEE GARDEN COUNCIL Mary McKenzie
LIBRARIAN Sue Gordon
ASSISTANT LIBRARIAN Kay Janssen

The opinions expressed in the Meristem are those of the authors. They do not necessarily represent the views of the Editor or the official policy of CBS. Permission to reprint is granted with acknowledgement. Original art work remains the property of the artist and special permission may be needed for reproduction.

This group of mounted *Neoregelia mcwilliamsii* seen on the front cover and a *Neoregelia* 'Burgundy' will be just two of the many bromeliads and plant related items up for bidding at the CBS' Evil Weevil Eradication Benefit Auction on March 15th. Photos by Larry Giroux.



THE CALOOSAHATCHEE BROMELIAD SOCIETY

MEETING TIME AND PLACE:

March Meeting - Sunday March 15th 2009

ST. JOHN the APOSTLE CHURCH 3049 MCGREGOR Ave. FT. MYERS.
DOORS WILL BE OPEN AT 12:30 FOR SETUP.

**Due to the Annual Auction
MEMBERSHIP SALES WILL NOT BE PERMITTED
at the March Meeting.**

The CBS Annual Auction

For nearly two decades, first with a specific “Evil Weevil Raffle” at our monthly meetings and later with our annual “Evil Weevil Auction”, the CBS has contributed tens of thousands of dollars to the Evil Weevil Eradication Program here in Florida.

Currently, sites in Lee County are being looked at for the release of the parasitic fly, which may help to reduce the destruction of the bromeliad weevil. Our donations have made this and previous releases throughout Florida possible.

Again this year we will host an Auction to raise needed money for this program. At the March meeting there will be NO Workshop, door prize, sales, Show and Tell, Program or Raffle. You can still bring “Friendship Plants” as give aways, if you do not feel they are worthy of going into the Auction. Please still bring in food items for the extended refreshment break. Don’t forget special baked goods can also be donated to the Auction.

**Please read the included article inside this issue for
specific information about the Auction.**

The Caloosahatchee Bromeliad Society is an active Affililate of:



FM-LCGC



Cryptanthus
Society



Bromeliad Society
International



FCBS

Society News

Editor's Note

It has been a long time since the Caloosahatchee Bromeliad Society's membership has created a public garden in Lee County. The sole exception to this has been the landscaping of the grounds of the Saint John the Apostle Church where almost exclusively through the efforts of Ross Griffith, who has donated or purchased most of the plants as well as having volunteered the hours of installation of the plants and maintenance of the grounds. When you see Ross, don't forget to congratulate him on his efforts. For those of you who have also donated plants to the Church, Thank you.

On February 14th, this dry period of CBS's creativity ended when a group of energetic CBS members created the "Bromeliad Garden" at the new Virginia Avenue location of the Fort Myers/ Lee County Garden Council Headquarters. About 200 bromeliads representing many of the genera of the *Bromeliad* family were planted in the 1000 square foot plot allocated to our society. Nearly 50 bales of pine straw were required to mulch our specific site. The grounds have a watering system, which will help guarantee the survival of the various bromeliads. Several members have agreed to return to the gardens and determine if specific plants will tolerate the light intensities during certain times of the day and seasons. If you would also like to volunteer to help maintain this garden, please speak to Mary McKenzie.

Below is a photograph of the CBS team, which was lead by Mary McKenzie, David and Geri Prall, all of who donated their time and plants for this project; not included in this picture was Pamela Sue Gordon and Ed Wenzlaff, who had to leave before we took the picture. (If I am forgetting anybody who helped with the garden and was also not included in the picture, please let me know.)

On February 16th, I received the following e-mail with the attachment of several photographs taken by Mitzi Marckesano, the President Elect of the FM/LC Garden Council

"Hi Dr. Larry,

*Here are some photos from yesterday....you guys were awesome!!
On behalf of Garden Council, Thank you, Thank you, Thank you!!! You
have set the bar pretty high...hope the other Societies are so inspired!!!!*

*Remember to join us for the Grand Opening, Feb. 27 from 5-7 pm
and bring your brochures, etc.....even some cookies/candy if you wish for*

(Continued on page 7)

The Planting of a “Bromeliad Garden”

Photographs by Mitzi Marckesano





your membership table, we will supply punch and cups!!! Should be a great event!! Great meeting some of your members and look forward to our future endeavors!

Mitzi Marckesano

President Elect, Fort Myers/Lee County Garden Council, Inc.”

In the e-mail version of the Meristem many of those pictures of our members at work will be published.

A Great job, well done CBS!



From left to right are Dale Kammerlohr, Jeff Lazar, Eleanor Kinzie, Betty Ann Prevatt Gary Nicholas, Larry Giroux, David Prall, Jeff Joffe and sitting are Geri Prall, Mary McKenzie and Terri Lazar; note the large *Alcanterea imperialis* as a center piece of the “Bromeliad Garden”, which I believe was donated by Dale.

February Program



John Banta

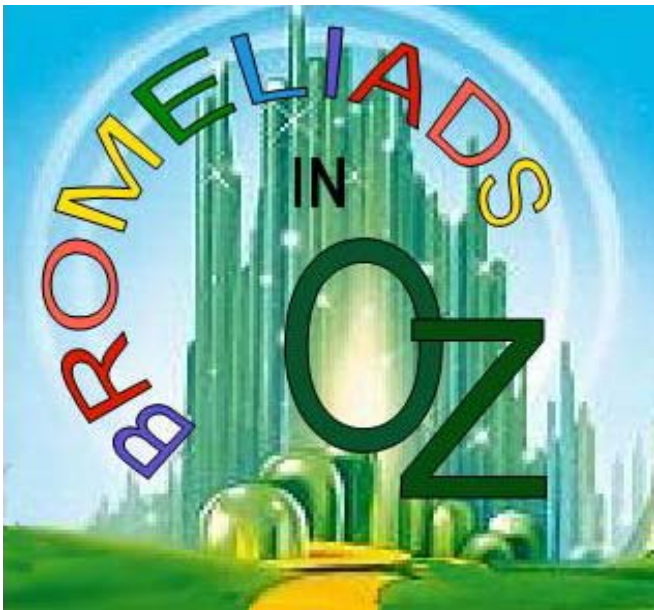
John Banta escorted us through Central America and throughout South America to the magnificent Iquazu Falls in a rediscovery of the regions the likes of Foster, Hawkes, Helen Kennedy, Burle-Marx and Fred Fuchs explored for many of the early years of their lives. Fortunately John was there to photographically record these experiences. Many thanks to John for bringing part of bromeliad history to life again for our enjoyment.

Local Bromeliad Events

The Fort Myers/ Lee County Garden Council Standard Flower Show

The “Newspaper Capers” Flower Show “Preview Party” is March 12th from 5-7 pm at the Edison State College, Bldg. S. The cost is \$30 per person, or \$20 for Flower Show entrant/exhibitor....at the door you will receive 2 beverage tickets, and a DOOR PRIZE ticket. Light hors d’ouerves will be available. We are acquiring great prizes for our Silent Auction...some of our donor/sponsors are the Key West Express (1 round trip), Edison National Bank (2 \$50 Savings Bonds), (2) certificates from PRP Winery for Wine Tasting-in you home for 15 people, a golf lesson at Fiddlesticks Country Club with the Director of Golf, Jim Kurtzeborn, a Dinner and Show for 2 at Broadway Palm Dinner Theater, a 2 night stay at Embassy Suites Hotel in Estero, 2 tickets to Pajama Game at Barbara B. Mann with a limo, and \$100 VISA gift card. More prizes are coming in everyday...take advantage of this special opportunity to be the first to view the newly judged horticulture and designs, and to bid on these great prizes, and our “Chinese Auction” items too. Everyone is invited, please pre-register, as there will be limited ticket sales at the door. For more information, call our Registrar, Nancy Wheeler at 267-7521 prior to March 9th.

The final numbers of votes were very close, but the final decision for the name and theme of our 2009 Bromeliad Show and Sale is:



Bromeliad Expose By Larry Giroux

Betty Ann recently gave me a printed copy of “The Ghost Writer” the Newsletter of the Friends of the Fakahatchee. Our own member Dennis Giardina wrote an article , which he is allowing me to reprint to share with our membership. I have also gotten permission to reprint a second article about *Tillandsia pruinosa*, one of the native Florida bromeliads.

These articles and photos first appeared in “*The Ghost Writer*”, the newsletter of the Friends of Fakahatchee, the Citizens’ Support Organization for Fakahatchee Strand Preserve State Park, and are reprinted with their permission. To read more or to contact them, see www.friendsoffakahatchee.org. Please acknowledge that these articles should not be reprinted from this publication and permission needs to be obtained from the Friends of the Fakahatchee before reproducing these articles and pictures. To read past issues of their newsletter and to see upcoming events involving the Everglades and our South Florida environment, please visit

www.friendsoffakahatchee.org.

The Future of Fakahatchee’s Big Cypress Bend Boardwalk

by Dennis Giardina

In the summer of 1996, a wildlife officer friend brought me out on patrol with him. I had just moved to Collier County and I was anxious to see more of the area beyond the Panther Refuge. We spent an entire day driving the back roads of State Road 29 and US-41 and in the late afternoon we ended up in a narrow little parking lot next to an Indian village and store. There were a lot of people dodging the cars entering and leaving to look at all the wildlife in and around the canal at the entrance. The water was high and very clear and, although it was right next to the busy Tamiami Trail, there were so many fish that it looked like an aquarium. I saw snook, bass, garfish and bream and aside from a healthy-looking native fish fauna there were many exotic fish as well. Schools of Oscars, Mayan cichlids and black acaras were numerous, big blue tilapia too. It was my first glimpse of the cosmopolitan South Florida aquatic ecosystem.

After a while of standing there with the other people and wading birds, we worked our way around the clustered entrance and started down the grassy road. My friend told me that the boardwalk ahead was incredible. He said it was a couple of hundred acres of primary forest and the largest stand of old growth bald cypress left in the Everglades. I wasn’t disappointed. We slowly followed along the boardwalk as it wound through the giant trees above the ferny, flooded forest floor. Birds of all kinds flew beneath the canopy and I especially remember a pair of pileated woodpeckers, foraging in the trees around us. They were very vocal, chirping at each other as they darted around and clawed their way up and down the tree trunks, scraping and pecking at the bark and poking their barbed tongues in crevices for the insects that make up a large part of their diet. It’s always impressive



**Photos by
Nelson Tilden.
Reproduced
with permission
of FOF.**

to see one of these magnificent animals take flight. They are about the size of a crow with a beautiful red crest and large black and white wings. If you're lucky, as I was that day, a pileated woodpecker will be near you, you'll be watching it and it will let out its loud, haunting call. There is nothing like it.



I marveled at the forest around me. It was the closest thing to a rainforest that I had seen in Florida; the shrubs and vines of the mid-story, the royal palms emerging through the bromeliad-

laden canopy, it was all so tropical. When we reached the end of the boardwalk, I couldn't believe the amount of wildlife around the pond, seemingly indifferent to us on the viewing platform. A flock of white ibises decorated the branches of the trees above us. An anhinga spread its wings to dry as a majestic great egret perched on a stump and preened itself. A large alligator floated out in the open and small fish splashed and popped at the surface. What was really memorable to me were all the water snakes and baby alligators, basking on logs right next to the platform. I had never seen that many wild snakes in one place before.

I remember looking out beyond the pond, deep into the surrounding forest. I thought that if there was this much wildlife here in the open, what kind of diverse and interesting organisms were out there? To this day that question continues to inspire and motivate me to explore the swamp, and our boardwalk at Big Cypress Bend is a place that I have brought many friends and family out to visit, to give them a glimpse into the natural world and to share my passion for it with them.

The Big Cypress Bend Boardwalk is really an outstanding place and it is the way the majority of the visitors to the Fakahatchee Strand experience the

Preserve. Over the next 50 years the population of the state of Florida is going to double from 18 to 36 million people. The pressure on Fakahatchee to accommodate additional visitors and provide them with a high quality and safe recreational experience at the boardwalk will be great. Going on 30 years old now, the boardwalk may last another decade or two with the help of the Preserve's staff and volunteers, but then what? The entrance and parking has not changed since my first visit 13 years ago and it was inadequate then. There are two port-a-potties available for the most desperate of boardwalk visitors but real bathroom facilities are what they need and deserve to have.

The Friends of Fakahatchee are working with the Park Manager to develop a plan for the future of the Big Cypress Bend Boardwalk. We all agree and have committed to one principle in the process; whatever we decide to do in terms of replacing the boardwalk and designing new visitor facilities there will be done in the most ecologically sound and sustainable way possible. What we plan for the boardwalk today will be our legacy tomorrow. It will reflect our appreciation of the Fakahatchee Strand Preserve and our commitment to share it with and protect it for all who come after us, both human and wild.

Dennis Giardina is the Everglades Region Biologist, Invasive Plant Management Section, of the FWC and was formerly Manager of Fakahatchee Strand. He is Vice-President of FOF.

Some of the bromeliads of the Fakahatchee

Catopsis berteroniana and its inflorescence



(far left)

Tillandsia setacea

(near left)

Tillandsia fasciculata

Tillandsia balbisiana



Photos- Larry Giroux

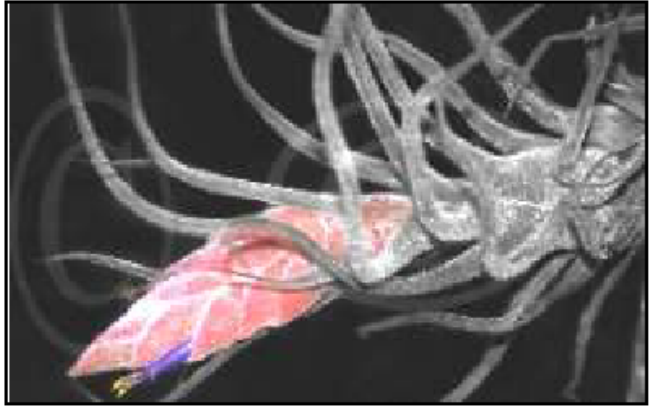
Seen here is a stand of cypress trees covered with the normal form of *Guzmania monostachia*. Although there are several areas within the southern Everglades where *Guzmania monostachia* grows, there is a very restricted area where the variegated form of this species (pictured below) can be found. Both forms produce seeds and offsets, but in spite of the potentially wide distribution by animals and wind, only green seedlings either from the normal form or the variegated form are likely to



become established and develop. The pockets of variegated *Guzmania monostachia* found in the Fakahatchee have developed from offsets of the variegated plants.

Photos by
Larry Giroux

**FUZZY
WUZZY
DECLINE**
By Jack
Berninger



Tillandsia pruinosa (fuzzy wuzzy air plant) numbers have declined from last year. Elaine and I conducted a population count on January 7, 2009, in the Fakahatchee Strand and found 34 of these plants along an approximate 1000 meter section of the tram we have surveyed over the past four years. Twenty six of these plants were located on the south side and only eight on the north side of the tram. There is significant decrease of the plants on the north side.

Comparisons over the past four years:

	South	North
2006	17	1
2007	32	2
2008	21	31
2009	26	8

There was a total of eight plants blooming; five on south and three on north side. Average height above ground on south was 2.50 meters and on north side 4.03 meters.

Hurricane Wilma in 2005 and subsequent vegetation changes and sunlight exposure may have been a factor in the population shifts on the north side plants which face south. It will be interesting to see what 2010 provides.

The photo above of the Fuzzy Wuzzy is courtesy of Rick Cruz whose pictures can be seen at Clyde Butcher's Big Cypress Gallery in Ochopee and, for the month of February, at the Museum of the Everglades.

(Editor's note: *Tillandsia pruinosa* is one of the 16 bromeliad species and 2 natural bromeliad hybrids native to Florida. Besides "fuzzy-wuzzy airplant, other common names include "hoary airplant" and "tropical airplant". Its habitat is shady, humid hammocks and strand swamp. This endangered Florida bromeliad is rather small, growing only about 8-10 inches tall in bloom. The simple flower spike emerges from a pseudobulb shaped rosette of leaves, which are covered with silvery-white scales giving the plant its fuzzy appearance. The primary bracts are pink and the flowers are violet. This rare plant here in Florida can be seen blooming all year long, especially in the Spring.)



A clump of *Tillandsia pruinosa* photographed during a Caloosahatchee Bromeliad Society field trip into the Fakahatchee. Photo by Larry Giroux.

Welcome to New Members

Jonathan Jensen and Mrs James P. (Joyce) Jensen

8821 Jurigo Lane Naples, Fl 34114-2721

jjofwianno@gmail.com

Joe & Boots Wright

5550 Dana Road Fort Myers Fl 33905 XXX-XXX-XXXX

Read the Expanded Newsletter

I have been asking members who have e-mail, if they can start receiving the Meristem exclusively by e-mail and I have gotten a good response from the membership. I want to remind the members that even if they can not receive the e-mail version mainly because they have dial-up internet service, they can still go to www.fcbs.org and read the expanded Meristem directly online. This issue has pictures of members creating the Bromeliad Garden.

Full rules and contact information for the upcoming Garden Council Show at Edison College

Nat DeLeon's proposal for clone preservation and more!

Go to www.fcbs.org

MARCH 15th 2009

12:30PM - 2 PM

We will be accepting donations such as bromeliads, other tropical plants, bromeliad and gardening related items, books and art. Bromeliads should be clean and healthy and appropriately labelled. If you are unsure ask other members for an ID. Certain items will be selected from donations for the SILENT AUCTION. All items will be numbered and labelled and will be display until the Auction begins. Please register for your bidding number at this time. **You can not bid in either Auction without a number.**

1:15 PM- 2:15 PM

Refreshment Break

This is the time for review of auction items and submission of bids for Silent Auction items, which will be set up in the hall. Each item will have a bidding sheet for you to write your bidding number and an offer. Other bidders as well as you can continuously up the bid as they wish.

2:15 PM

We take our seats and the Auction will begin following any announcements from our President. During the Auction, Silent Auction items will be randomly removed and the winner will be announced. Until an item is taken, you may continue to up your written offer..

Conclusion of Auctions

After an item has been won it will be returned to a holding area. At the completion of the auction you will need to pay the cashiers with **cash or check** and your claim stubs will need to be given to the workers in the holding area. Your items will be handed over to you. We ask that you help us to avoid any confusion. We want everybody to get exactly what they have won as quickly as possible without mistakes. Please note that this year we will be using a three part ticket; one part stays with the plant, the record keepers keep one part and the bidder receives one part immediately after winning the item, which they will need to claim their winnings. This makes it possible for bidders to check out early; however, we encourage members to stay until the completion of the Auction when we will have several people available to check you out.

Get Some Great PLANTS and Items for your home and garden and have a lot of FUN at the same time.

Donate to and Attend our Annual Auction!

Bromeliad Clone Preservation Project

By Nat DeLeon and Alan Herndon

Unexpectedly Nat DeLeon was able to speak at our February meeting; he briefly presented an explanation of the clone preservation project as authored by Nat and Alan Herndon.

Since then I have received an update from Alan. The following is an e-mail message I received .

Greetings,

We are moving forward slowly with the clone preservation project. It is clear that site visits, although ultimately necessary, are going to be a painfully slow way of gathering basic information on the distribution of plants in collections. We are, accordingly, trying to find ways of gathering more information quickly. One potentially useful method, suggested by Nat, is going through lists of plants entered in past shows. BSSF does not have a history of saving the show entry forms, so we can't recover past data, but it should be useful for the future.

In addition to gathering information, we are looking for a way to get more of the membership involved in the project. The attached article was intended to be included in the BromeliAdvisory, but it hasn't made it in either of the past two months. The article is intended to prod BSSF members into taking a more active role in clone preservation and provide some of the distribution information we need. It is our hope that other societies throughout the state can undertake similar efforts with groups of plants of particular local interest.

I will be sending updates, probably on a monthly basis for the rest of this year, or until a formal method of communication is established (if you don't wish to receive the updates, please let me know; if there are other people you think would be interested in the updates, let me know).

Thank you.

Alan Herndon

Below is the most recent article from Alan as well as the original Clone Project Statement.

Clone Preservation Project Goes Statewide

By Alan Herndon

At the 10 Jan 2009 meeting of the Florida Council of Bromeliad Societies (FCBS) representatives, Nat DeLeon urged extension of the clone preservation project currently underway at BSSF to all areas of the state. The proposal was accepted and it is time to move forward.

Given the daunting size of the overall project, we would like to start with a more reasonable subproject. We will first attempt to locate and assess the abundance of hybrids and species cultivars produced in the Miami area. This includes plants produced by Ralph Davis, Bob & Catherine Wilson, Gary Hendrix, Bullis Bromeliads and Nat DeLeon. A preliminary listing of the plants we are searching for (by hybridizer) was compiled from the Bromeliad Cultivar Registry. We know there are errors and lots of omissions in this list, but it provides a

convenient starting point. If you have any corrections or additions to this list, please send them along.

Bullis Bromeliads

Aechmea Alegria, Big Harv*, Black, Blue Moon, Blue Tango*, Burning Bush*, Carioca, Chocolate, Coppertone, Del Mar*, Dennis B.*, Fantasia*, Flamingo, Galaxy, Hacienda, Jubilee, Little Harv*, Marcelino, Patricia, Peaches 'N Cream*, Peggy, Pica, Pink Banners, Pink Passion, Shining Light, Tropic Torch, Yellowstone *Androlaechmea* Dean*, *Ananas* Mongo*, *Canmea* Galaxy*, *Guzmania* Ice Cream, Ice Milk, Poinsettia, Van Horne, Yellow Marjan, *Neoregelia* Antigua, Bailey, Ballerina, Buckingham, Carmen, Carousel, Chardonnay, First Prize, Fairchild, Flamenco, Gespacho*, Isabel, Jeffrey Block*, Kiti Wenzel, Las Vegas, Little Rose*, Lois Bullis, Mackaboy, Magic Palette, Marsala, Maya, Medium Rare, Mocha Mint, Mojave Beauty, Moonshine*, Patricia, Peggy Bailey, Prince, Puerto Rico, Purple Rain, Red Pepper, Rivera, Sparkle, Spots, Sundance, Sunshine, Super Fireball, Tossed Salad* *Vriesea* Bananas, Caramba, Herb, Mint Julep, Queen Mariae, Sensation.

Ralph Davis

Aechmea Anonymous, Bill Hobbs, Dubiosa, Ignotus, Kashkiniana, Morris Henry Hobbs, RaRu, *Canmea* RaRu, *Guzvriesea* Jeannie, *Neomea* Memoria, Ralph Davis, Whisky Street, *Neoregelia* All Red, Crown Prince, Cup of Flame, Davis' Pink, Green Wine, Karen, Little Punk, Mac Mar, Malibu, Pink Felt, Ralph Davis, Red Best, Rio Ochre, Ruby, Ruby Lee, Spotted Maroon, Takemura Grande, Takemura Princeps, Ti Di, *Nidularium* RaRu, Red Queen, Ruby Lee, *Vriesea* Bamboo Hybrids

Nat DeLeon

Aechmea Candy Stripe*, *chantinii* DeLeon*, Coppertone, David Barry*, Eileen, El Morro, *fasciata* DeLeon*, *fasciata* Gray Ghost, *fascicaulis*, *nudicaulis* Silver Streak*, Orange Sherbert, Pica, Pink Frosty, Pink Rocket, Porphyry Pearls, Purple Gem, Starbrite, Victoria*. *Ananas* Candy Stripe *Canmea* Smokey *Dyckia* Yellow Glow *Guzmania* Cherry Smash, Dubbonett, *lingulata* Superb, Shining Brightly, Spirit of '76, Star Fire, Wild Cherry *Neophytum* Gary Hendrix, Ralph Davis *Neoregelia* Fraseana, Inferno, Orange, Purple Haze, Royal Prince, Spiralis, Spots and Dots, Stormy Weather, Super Fireball, Thunderclouds *Nidularium* Sao Paulo* *Nidumea* Midnight, Superstar, *Ortholarium* Hades, *Orthomea* Powderpuff, *Orthophytum* Blaze, *Vriesea* Blaze, Eileen, Juno, Perfida, Stoptlight.

Gary Hendrix

Aechmea Harlequin, *Guzmania* Candy Corn, *Neophytum* Firecracker, Shiraz, *Neoregelia* Amethyst, Angel Face,* Ariel*, Aurora, Avila, Big Mac, Bob Read's Lad, Butterball, Cheers*, Clover, Domino*, Echo, Fiesta, Gemini, Granada*, Grape, Green Apple*, Joseph's Coat, Medusa, P (yes, just P), Peppermint, Pinwheel, Pollyanna, Prince, Purple Haze, Red Clover, Red Waif*, Redneck, Sailor's Warning, Sara Lee*, Shamrock, Tar Baby*, Tinta, Twinkle, Windemere, Yamamoto, *Nidumea* Kathleen, *Orthophytum* Blaze, Copper Penny*.

If you have any of these plants, or think you have any of these plants. Please bring them to a monthly meeting if you think they are not commonly found in collections. (Plants known to be available commercially are noted with an *. Please let us know if other plants are available.) Our lists are clearly incomplete for Bullis Bromeliads and, especially, Nat DeLeon. If you have hybrids not on the above list that you think came from either of these sources, bring them in.

Bromeliad Clone Preservation Project

By Nat DeLeon and Alan Herndon

It has been nearly 60 years since the Bromeliad Society International (BSI) was formed and almost 50 years since the Bromeliad Society of South Florida (BSSF) was organized as an affiliate of the BSI. During this period, bromeliads have gone from being hard-to-find plants of interest to only a small cadre of highly motivated (some might say obsessed) collectors to a mainstream crop easily available to every American in local stores.

Along with the shift from collectible to commodity, large numbers of species were imported and huge numbers of hybrids were created to meet the demands of the mass market. As newer hybrids took over an ever larger share of the market, older clones began to disappear from sight. Many examples can be cited by people growing bromeliads 30-40 years ago. For example, I no longer have any idea where to find *Aechmea fulgens discolor* 'Magnificent', if it still exists. Nor have I seen *Aechmea pineliana minuta* in recent years. The small form of *Aechmea tillandsioides*, that was commonly grown in southern Florida 30 years ago, now seems to be represented only by the albomarginate clone.

Note that the term clone is used both to describe genetically distinct collections of species and different hybrids. In general, a clone represents a group of genetically identical plants. These clones are commonly produced by asexual reproduction (i.e., not grown from seed). Each collection of a species in the wild almost always represents a genetically distinct clone. In the same way, virtually every seedling produced by crossing distinct clones of a single species (*Aechmea chantinii* is a good example) represents the start of a new distinct clone. In practice, we are not going to genotype plants, we will only recognize clones where the genetic difference manifests itself in the appearance of the plant. The same considerations apply to hybrid clones. We are only concerned with clones that differ in appearance.

Some of the old clones have undoubtedly disappeared, but bromeliads are a remarkably hardy group of plants, and many of the older plants may still exist in the odd corners of small (or large) collections. As time passes, identification of these clones becomes harder as labels are lost in the normal course of events and memories fade. There is also a slow but steady loss of plants in even the best maintained collections. Natural disasters (windstorms and floods, in particular) can lead to catastrophic losses in both plants and the labels attached to the plants. However, the most serious risk of wholesale loss in older collections occur when the owners die, move or become too ill to care for their plants.

In some cases, it is important to have these older clones in hand. For instance, I have not found plants comparable to the plants we used to call *Neoregelia ampullacea ampullacea* and *Neoregelia ampullacea tigrina*. Without the plants, I cannot even guess how they relate to the *Neoregelia ampullacea* complex as understood today.

We propose a project to preserve these old bromeliad clones. The project will focus on providing information on what clones are available and who is growing them. Specific goals include developing a database of the different bromeliad clones in cultivation, create a list of individuals growing each clone, and provide a framework for trading and selling these clones among interested growers. Clones most in danger

of being lost in cultivation will be identified in the database.

The database will ultimately include all identifiable bromeliad clones, old or new. Clones will be identified by comparison to old photos and descriptions whenever possible. Older growers, such as Nat Deleon, will also be pressed into service to help with the identification of these plants. The initial priority will be identification of older clones, since these are most likely to have dwindled in cultivation.

Local Bromeliad Societies will play a crucial role in this project. Many desirable clones are probably waiting to be found in older collections where labels have been mixed and lost over the years. Knowledgeable local society members will be needed to ferret out these plants and establish their true identities. Local societies will also need to keep track of the individual growers in the database so all interested persons can be notified when a collection rich in desirable older clones is about to be dispersed. Finally, local Bromeliad Societies could help preserve the more important clones by including them in their plant distribution programs.

The general database should be open to all interested parties. Small commercial growers who would be willing to grow a clone that sells five to ten plants a year might find the database provides the necessary market. Collectors might find the database provides a way to exchange duplicates for money or other plants.

There should also be a membership network of people most interested in growing these plants. The primary aim is to have each clone established in more than one collection to guard against loss. Membership would be open to anyone willing to follow a few rules. Members would have to follow strict guidelines for labeling plants and ensuring labels are not lost. The central database would include a unique identifier for each clone that could be used in labeling so individual growers would not have to maintain the complete record associated with the clone. All members would agree to provide a minimum number of free offsets (perhaps 5) yearly for the benefit of the project (other offsets may be traded or sold for the benefit of the member). Finally, in the event of a natural disaster befalling one member, other members would be expected to help restock the collection of the affected member. Benefits to members would include a ready source of information on all clones in the database and a directory of potential sources for desired plants. Members would also receive advance notice when another members collection (or a significant part thereof) becomes available. Finally, members could expect assistance in recovering their collections from disasters.

(Editor Note: The original document concluded with “Specific Actions for BSSF” with a list of members with collections reaching back into the 1970’s. Obviously this specific job could be applied to another region, e.g. Lee County. Once this list was established, Nat and Alan recommend the following actions)

Develop inventory for the older collections through site visits.

Establish identity of plants, including chain of custody, if possible.

Determine clones in most danger of being lost (i.e. those found in few collections)

Distribute clones through society channels (holiday party, raffle, door prize, auction)

Establish network of growers interested in preservation of important clones

I got the following message and pictures from Carol Sweat taken by Carol and Chuck Ray of Naples asking for identification. I sent the pictures around and in the captions are our IDs.

“Hi Larry and Steve,

I got an email from Chuck regarding the identification of a bromeliad. Neither of us know what it is. I assume it is a Aechmea.

I have two bromeliads in bloom also without names. I thought Carol1 was a Portea but now I am not sure. That bloom has been on it for months. Carol2 has a new inflorescence and both have been grown in a lot of sun. I should have brought pictures with me Sunday but I forgot. Do you have any ideas about their names?

Carol & Chuck”

Pic “Chuck 1”- Steve Hoppin and I and Betty Ann Prevatt feel we have this plant growing and blooming in our yards. We received it many years ago as *Aechmea* ‘Avalon’. Unfortunate a search of the internet and my library failed to find its registration. I suspect from the appearance of the inflorescence that it is a hybrid of *Aechmea weibachii* var. *weibachii* with another stiffer leafed aechmea. Anybody have any other ideas?



Pics “Carol 1 & Carol 2” on the next page. I made the suggestion that the first picture was a “berrying” - *Portea alatisepela*, while “Carol 2” is a picture of a fresh new inflorescence of *Portea alatisepela*. This was based on a comparison to pictures on www.fcbs.org by Dorothy Berg and Dennis Cathcart. However, pictures by Elton Leme on the same

site and in “Blooming Bromeliads” are significantly different. Anyone growing portejas, have you got an identification for these plants?



CBS February Meeting Minutes

DATE: Sunday, February 15, 2009 **LOCATION:** St. John the Apostle Metropolitan Church, Fort Myers, Florida **ATTENDANCE:** 45 members and guests **SET-UP:** Ross Griffith and his gang set-up the meeting room and workshop room. Mary McKenzie and Sue Gordon set up the refreshment room. **WORKSHOP/SHOW & TELL:** Show & Tell was conducted in the workshop room by Dale Kammerlohr. **CALL TO ORDER:** At 2:00 PM Donna Schneider opened the meeting with an introduction of our guests, Joe and Boots Wright, who became new members later. Other guests included Nat DeLeon and Craig Morell. **MINUTES:** Reading of the minutes was waived as they were printed in the newsletter as submitted by Larry Giroux. They were approved as printed. **OLD BUSINESS:** Donna talked about the **RAFFLE**. It is important to bring clean, named plants that anyone would want. Bromeliad related items are also welcome. Steve made a motion that the Board review the names and themes for this year's SHOW & SALE as no more suggestions came in. The board will make the selection and it will be announced at the next meeting. It was reminded that the plant sales are 25% to the CBS and 75% to the seller. Members selling at meetings must register with Betty Ann Prevatt, treasurer, before the meeting and Check-out with her after the meeting. **NEW BUSINESS:** There will be no business meeting next month as there will be our annual Plant Auction. Mary McKenzie announced that the Garden Council Building's new bromeliad garden was put together by several members on February 14th. The Garden Council members remarked how beautiful the bromeliad garden turned out. The Garden Council will have an OPEN HOUSE on February 27th, with punch and cookies at the Virginia Street location. Larry said the deadline for dues was today for your contact information to be included in the ROSTER. Anyone wishing their picture taken see Larry today. Also, let Larry know at least a week before the meeting if you did not get a newsletter by mail or e-mail. You should have gotten it by then; otherwise he will get one to you. Steve said he has had a few tips on new meeting places and will follow up on the information. The BSI sent a thank-you for our donation for their color publication. We also received a thank you from the BIC. Betty Ann volunteered to send a congratulatory note to Harry Luther for his 30 years of service to Selby Gardens. **DOOR PRIZE:** Betty Ann donated a basket of neoregelias which was won by guest, Craig Morell. **REFRESHMENTS:** Served by Mary McKenzie and Sue Gordon. **PROGRAM:** John Banta gave a wonderful slide show entitled "Those Were the Days". He was introduced by Bruce McAlpin. He was influenced by Mulford B. Foster's book "Brazil -Orchid of the Tropics". His trip starts with his trip to Brazil, his interest in "pretty leafed plants", his love of many varied calathias. His trips continued to Peru, Ecuador and Asia. A very entertaining speaker, not too proud to let us know he didn't know ALL the names of the plants; for example, "vr. I don't know who", "I don't know who this critter is" or "I don't know this one but wish I had it"! Great Pictures! **RAFFLE:** Conducted by Dolly Dalton, Betty Ann Prevatt and Larry Giroux. **ADJOURNMENT:** Donna adjourned the meeting at 4:15 and Ross was assisted by a whole crew in cleaning and putting the room back in order. **THE MORE PEOPLE WHO HELP - THE LESS TIME IT TAKES!!!**

Respectfully submitted by: Luli Westra, CBS Secretary

Calendar of Bromeliad Events

March 12, 2009 7PM-9PM (Preview Party-Paid Admission for the opening of the FtM/LC Garden Council Flower Show.)

March 13, 2009 9AM-5PM (Free to the public) “Newspaper Capers”- A Standard Flower Show hosted by the FtM/LCGC
Edison State College 8099 College Pky Bldg S, Rms 106-107, Ft Myers
For more information go to <http://fmlcgardencouncil.com/upcoming.html>

April 4, 5, 2009

Bromeliad Society of Broward County’s Annual Show and Sale at the Plantations Women’s Club, Fort Lauderdale, Florida. Judged Show Friday April 3rd, Show and Sale open to public April 4-5th – more details to follow as available.

April 17-19, 2009

Bromeliad Society of South Florida will host their Show and Sale at Fairchild Gardens in Miami, Florida. Judged Show on April 17th with Show and Sale April 18-19. Auction at Noon April 18th.

April 19, 2009

The 29th CBS Birthday Party

April 25 - 26, 2009

Annual Sarasota Bromeliad Society Show and Sale- Marie Selby Botanical Gardens, Sarasota, Florida-April 25 (10 AM-5 PM), April 26 (10 AM - 4 PM) Plant sales will also be held April 24 (10 AM - 5 PM).

May 2-3, 2009

Greater New Orleans Show and Sale

November 13-15, 2009

The FCBS Bromeliad Extravaganza, hosted by the Bromeliad Society of Central Florida, will be held at the Renaissance Orlando Hotel Airport in Orlando Florida, Sales, Seminars, Tours, Banquet and Rare Plant Auction. Information to follow.

December 4-6, 2009

The Caloosahatchee Bromeliad Society’s Show and Sale, Terry Park, Fort Myers, Florida. Judged Show on Friday with Show and Sale open to the public Saturday Dec 5th- 9AM-5PM and Sunday 10AM-4PM.

December 20, 2009

The CBS Holiday Party

July 26-August 1, 2010

The BSI World Bromeliad Conference - Bromeliads in the Big Easy (Astor Crowne Plaza - New Orleans). “Catch the Fun”.



Caloosahatchee Bromeliad Society
3836 Hidden Acres Circle N
North Fort Myers, FL 33903
E-mail - DrLarry@comcast.net



“EVIL WEEVIL AUCTION”

March 15th 2009

An electronic version of the 2009 Pictorial Rosters will be sent out prior to the meeting; the printed form will be available at the March meeting