



THE CALOOSAHATCHEE BROMELIAD SOCIETY'S

MERISTEM

Nov-Dec 2023

The Caloosahatchee Bromeliad Society *PRESENTS*

Red Hot Bromeliads!



Bromeliad Show and Sale

Judged Show, Thousands of BROMELIADS for sale!

EDISON/ FORD WINTER ESTATES

2350 McGregor Blvd. Fort Myers

Saturday Dec.2nd 2023 9AM-5PM

Sunday Dec.3rd 2023 10AM-3PM

Contact Betty Ann Prevatt at (239) 334-0242 for Info.

CALOOSAHATCHEE BROMELIAD SOCIETY OFFICERS

EXECUTIVE COMMITTEE

PRESIDENT— Julie Stein 919-522-1182 FLAGIRL56@aol.com

Past— PRESIDENT— Vicky Chirnside 941 928-3111 (dampearth@me.com)

**Vice-PRESIDENT— Dale Kammerlohr 863-558-0647
(dzdaze@embarqmail.com)**

SECRETARY— Alison Ackerman 239-851-3176 (Alison@spikowski.com)

TREASURER—Betty Ann Prevatt 239-229-7781 (bprevattpcc@aol.com)

STANDING COMMITTEES CHAIRPERSONS

NEWSLETTER EDITOR—Larry Giroux 239-850-4048 (DrLarry7@gmail.com)

FALL SALES CHAIR—Brian Weber 941-256-4405 (brianweber1b@hotmail.com)

PROGRAM CHAIRPERSON—Acting Chair: Julie Stein

WORKSHOP CHAIRPERSON—Acting Chair: Julie Stein

SPECIAL TRIPS— Kyle Wade 570-269-5103 kwade46.kw@gmail.com

CBS FCBS Reps.—Vicky Chirnside 941-928-3111 (dampearth@me.com)

Julie Stein 919-522-1182 (flagirl56@aol.com)

MEMBERSHIP—Betty Ann Prevatt 239-229-7781 bprevattpcc@aol.com

Larry Giroux 239-850-4048 Drlarry7@gmail.com

OTHER COMMITTEES

DOOR PRIZE—Debbie McPhail 239-332-4607 or 239-910-3836 ;

email- deb.mcphail@yahoo.com

HOSPITALITY (Monthly Refreshments)—Diane Cornelison 239-233-7037

Party Chair—Vacant

RAFFLE TICKETS—Greeter/Membership table volunteers—Dolly Dalton, Luli Westra

RAFFLE COMMENTARY—Larry Giroux

GREETERS/ATTENDANCE—Betty Ann Prevatt; Dolly Dalton (dollyd@comcast.net), Luli Westra

SHOW & TELL—Dale Kammerlohr 863-558-0647

FM-LEE GARDEN COUNCIL—Alison Ackerman 239-851-3176 Alison@spikowski.com

LIBRARIAN—Norma Jean Ridzyowski

HISTORIAN—Tom Cowell 732-735-0121 njtom732@aol.com

MARCH AUCTION CHAIR—Larry Giroux 239-850-4048 DrLarry7@gmail.com

The opinions expressed in the Meristem are those of the authors. They do not necessarily represent the views of the Editor or the official policy of CBS. Permission to reprint is granted with acknowledgement. Original art work remains the property of the artist and special permission may be needed for reproduction. Printed by Stinger Digital Print & Graphics, Cape Coral, FL.



THE CALOOSAHATCHEE BROMELIAD SOCIETY

September Meeting: Sunday, Nov. 19th 2023
In lieu of the Dec. Mtg we will have our Holiday Party

Our Meetings are at the
Ft. Myers– Lee County Garden Council Building
2166 Virginia Ave. Fort Myers.

The facility is north of the Edison Gardens parking lot and about 1/2 miles north of our previous meeting location— Covenant Presbyterian Church. Virginia Ave is approximately 3 miles north of the intersection of Colonial Blvd. and McGregor Blvd. and is the 2nd Street north of the Edison Gardens

The CBS Board has established a more structured schedule for our meetings, which we will adapt as necessary—

***12:30-1:15:** Doors open, check-in, membership, distribution of door prize tickets and sale of raffle tickets, membership or speaker plant sales.

***1:15-1:45:** Workshop **1:45-2:00:** Break, plant sales continue

2:00-2:15: Business Meeting **2:15-3:00:** Program followed by door prize

3:00-3:30: Break for refreshments **3:30-4:00:** Show and Tell and Raffle
4:00: Clean up

Please bring food, Friendship, Raffle and Show and Tell Plants
There will be no membership sales allowed at the November meeting.

MEMBERSHIP DUES FOR 2023 ARE DUE BY THE END OF JANUARY
Membership renewal fees are \$15/20 single/dual; New member dues: \$20/25, single/dual payable by check or cash at the meeting or by mail to
Betty Ann Prevatt, CBS Treasurer 2902 Second Ave. Fort Myers, FL 33916

The Caloosahatchee Bromeliad Society is an active Affiliate of:



Cryptanthus Society



BSI



FCBS



FM/LC GC

November Program Landscaping with Bromeliads By Tom Wolfe

We are overdue for a program by our dear friend Tom Wolfe. Tom has been deeply involved in the bromeliad world for many decades. With his participation in the Bromeliad Society International as its President and multi-term Director to his contributions to his own Society, the Tampa Bay Bromeliad Guild and the Florida Council of Bromeliad Societies, Tom has been there to guide us, educate us and build our hobby in so many ways. It will be so great to see Tom and his wife Carol again. We don't know if Tom will be bringing plants for sale this time, but we will let you know if that is the case.

November Workshop The 2023 CBS Show and Sale

Your Show and Sale Chairs will be available to discuss details of our upcoming event at this Workshop. Such things as ...How to prepare a horticultural entry...How to enter an artistic exhibit...interpreting the Show Schedule...the rules of the Sale and what you need to do. Before coming to sell and many other helpful hints will be reviewed. Bring your questions. Show entry forms and cards as well as the mini-Artistic cubes will be available. This year we are changing things around and we will be giving special awards and gifts to the Show winners...we will tell you all about these changes at the Sunday meeting.

We are still looking for volunteers to help out in the Show and Sales' areas on each of the days. Please confirm with the Chairs if you are volunteering.

Election of officers for 2024

First, we need to commend our Officers and Committee Chairs for their commitment to the Caoloosahatchee Bromeliad Society, this past year. Following Covid and Hurricane Ian, in spite of many overwhelming personal hardships, they have found time to manage Society business. Many KUDOS for their efforts. That being said, all of our Officers have agreed to return in their positions for 2024. The slate of Officers for 2024 up for re-election is:

**President.....Julie Stein
Vice-President....Dale Kammerlohr
Secretary....Alison Ackerman
Treasurer....Betty Ann Prevatt**

ELECTION will be held at the November 19th 2023 CBS Meeting

Check List for participating in the CBS Show and Sale Dec 1st-Dec3rd 2023

Attend the November CBS meeting to:

- * Pick up Show entry cards, Show Schedule and entry forms**
- * Pick up a 6” x 6” cube for a mini-Artistic Arrangement (if you are planning on submitting a mini-arrangement, please text Larry Giroux at 239-850-4048 or e-mail him at drlarry7@gmail.com ASAP to let him know to reserve a “cube”. Full size Artistic Arrangements are not provided a niche.**
- * Don’t miss the November Workshop where the Chairs will answer all your questions and discuss prep of entries.**
- * If you have not done so, use the November meeting to fulfill the requirement for attending 2 meetings to be able to sell at the sale.**
- * Confirm with Brian Weber your intent to Sell, obtain an ID and colored labels if you need to. Obtain a “site” from Brian for your tent/tables. If you want to sell just a few plants on the Membership Table, let Brian know.**
- * Talk to the various Chairs and confirm you’re volunteering as setup Clerks, Placement, Head table setup, Co-Chairs, sales helpers, assistants during the Judging with record keeping, etc.**
- * Pick up road signs at the meeting and be familiar with the rules in your city or county for placing them.**

It is never too early to select the plants you want to show (remember, you must enter two entries in the Show to qualify to sell; learn more at the November Workshop).

Remember we do not have a Hospitality Room and there is no guarantee what type of food vendors will be there, so plan appropriately.

For those who are either new members or unfamiliar with how we stage our Sale and Show the following is a breakdown of the proceedings.

SCHEDULE OF THE CBS SHOW & SALE

Friday Dec 1st starting about 7:30AM

If all goes as scheduled, a selected group of workers will have set up all the tables and society tents for the Show and Sale on Thursday afternoon. A few of the members will be covering the tables and making final adjustments on Friday AM. We will be asking for volunteers at the Nov. meeting. Workers need to start arriving by 7:30AM on Friday at the latest to set up the Registration, Entries, Classification and Placement areas. These workers should bring in their plants for early entry. We start as soon as we can to enter plants. At the October or November meeting Brian Weber, Sales Chair will announce when SELLERS can start bringing in their plants and setting up their tents for the sale (this is usually about at about 10AM; sellers can drop off their entries if they have the proper paper work completed prior to dropping off their sale plants or after sales setup. Remember, entries close by 12 noon on Friday.

Friday Dec 1st 8:00AM

Entries and Classification officially open and will go until 12 Noon. We will be providing Entry forms and Entry cards at earlier CBS meetings. Exhibitors need to bring their entries with their forms starting at 8AM.

Friday 10AM

Sellers can have access to their booth sites (sooner if arranged with Brian Weber, Sales Chair). The Sales area is the same as last year, while the Show area may include an enclosed room adjacent to the patio where the 2021 Show was held.

Friday 12:00-12:45 PM

The setup of the Show room should be completed and most workers will be asked to leave unless on committees needed during the Judging. Clerks should be meeting with Vicky Chirside, our Clerks Chairperson and becoming oriented with instructions and equipment. Judges are returning from their luncheon about 12:30PM and starting with their orientation. Clerks and Judges are assigned and Judging will start at 1PM. There will be occasional breaks and Hospitality will have tables set up with refreshments for the Judges and workers in the Show room. We do not have a kitchen or Hospitality area at Edison, so plan on bringing your own food or buying from food vendors for your own consumption..

Friday 1 PM to ~5:30PM

The Judges are all volunteers. They travel here at their own expense. As a Thank You, we give them a gift certificate to be used at the Sale. Most will leave after the Sale so during breaks and at the completion of the Judging, the Judges will be buying from sellers who are set up. A cashier will be available also. As an incentive to the volunteer workers, they also will be allowed to buy from the sellers during these hours. Judges are often collectors and your best buyers. Clerks are needed to help with

major award judging once the merit judging is completed as well as movement of plants and re-placement of plants after judging.

Friday Afternoon following Judging

Setup of the Headtable for displaying the winners and organization of Show Hall in preparation of public showing. Sale open to Judges and Volunteers. Major Award winners can pick up their cash vouchers.

Saturday 9AM-5PM, December 2nd....Show and Sale open to the public

Sunday 10AM-3PM, December 3rd....Show and Sale open to public

Sellers who were unable to come on Friday should arrive early with their sale items, claim their designated spots and organize their space on Saturday morning. Be sure to make arrangements with Brian Weber if you are setting up on Saturday. Please arrange to enter your 2 Show plants on Friday AM before 11:30AM. You can replenish your tables anytime Saturday and Sunday. Doors open at Sat. 9AM and Sun 10AM to the public. Be sure you have checked with Brian, gotten your tags, ID number and table assignment in the weeks before the Sale. Read the rules. Unless you have permission from the Chair, you cannot break down your area until close of Sale at 3PM Sunday. Show plants and awards can be picked up at that time. Vendors are expected to help with setup and break-down where and when possible.

We have a special award, “The Members’ Choice Award”, which we give to the plant(s) voted by the members as their “Best in Show” from among those which did not get to the head table. We ask that all members vote for this award on Saturday morning for display in the afternoon.

Saturday and Sunday is when we need volunteers to help at checkout...cashiers, tag pullers, carriers, box makers, holding area receivers and guards and hosts in the Show area. Again, we will NOT have a kitchen or hospitality area, although Food vendors will be on site.

Sunday afternoon ...3PM

As 3PM Sunday afternoon approaches, we all want to pack up and go home after a busy weekend. However, we are obligated , unless you have sold out or have permission from the Sales Chair to leave early, to stay until 3PM. If you wish to consolidate your items and displays while continuing to display them, that is fine. The same holds true for your Show entries; unless you have permission from the Show Chair, please do not remove entries until 3PM. We need help with overall break-down of the Sales and Show areas...with fencing, tents, tables, etc. So where possible contribute some of your time helping in these duties.

This year we are doing something different with the awards. Instead of plaques to Division and Section winners along with a store bought gift,

we are giving BSI medallions and prize money as either cash or gift certificates good for purchases from the vendors. These will be distributed on Friday night or Saturday morning.

With in a week or so following the Sale, Betty Ann Prevatt and Brian Weber will have tabulated all the plant tags and will distribute checks for the vendors' sales minus the 25% kept by the CBS to pay sales taxes and the costs of the Show and Sale.

If you haven't decided to sell at our Sale, give it more thought and get in touch with Brian Weber to give him your tag ID, pick up the blue sale tags and get your space assignment; read the Rules of the Sale and start looking around your collection for Show and Sale plants.

The printed Show Schedule will be distributed and reviewed in the coming months. Help with preparing your plants and exhibits for the Show and Sale will also be given in the CBS Newsletter and at the meetings.

Show and Sales Chair Assignments (partial list)

Show Chair.....	Betty Ann Prevatt 239-229-7781
Show Co-Chair.....	Julie Stein (919) 522-1182
Clerks Chair.....	Vicky Chirnside 941-928-3111
Sales Chair.....	Brian Weber 941-256-4405
Awards Chair/ Headtable.....	Larry Giroux 239-850-4048
Show Schedule.....	Larry Giroux 239-850-4048

PLANT SALE RULES and DECORUM *Please review the SALES RULES carefully.*

1. Plant sales identification, necessary sales labels and allocation of table space will be assigned by the Chairperson, Brian Weber: brianweber1b@hotmail.com, 941-256-4405 (cell). You must be pre-registered with Sales Chair.
2. Sale hours for the general public will be Saturday, December 2nd 2023 from 9:00 a.m. to 5:00 p.m. and Sunday December 3rd 2023 from 10:00 a.m. to 3:00 p.m.
3. Plants will be received Friday, - December 1st, 2023, following the setup of the sales area, we will be asking for volunteers for setup of the fence, cashier tables and membership tables on Thursday. (Since the majority of vendors are responsible for setup of their own tables and tents, a more definitive Setup time will be announced for Friday in the CBS Newsletter or at the CBS meetings). Unsold plants must be removed Sunday, by 4:00 p.m. or become the property of CBS.
4. All plants must have TWO TAGS - A white or near white tag which indicates the plant's name (it may have your ID on it). The second tag should be a colored tag either obtained from the Sales Chairman or a colored one previously used at a CBS Sale. *The sale price must be legibly written in INK with a permanent marker on the Blue (or colored) Sale Tag. To be consistent and make it easier for our customers & cashiers, please put the price with a \$ on top of the tag, vendor code towards the middle of the tag.* All plants and other sale items

should be labeled in this manner before arrival at the sale. While we encourage the reuse of previous years sale tags, please do not use any that have been cut shorter than 2/3 the original length. On large plants, especially those in the landscape area, please have a sticker or sign with the price to make it easier for customers to see without them having to lift the plant to see the tags that are attached to the bottom.

5. To be eligible to sell plants, a CBS member must:
 - a. Be a member in good standing at least five months prior to sale.
(Must be a member by July 1st to sell at the December sale.)
 - b. Be required to attend a minimum of 2 meetings a year.
 - c. Follow all Caloosahatchee Bromeliad Society plant sale rules.
 - d. Help in the sales area and assist in clean up.
 - e. Have not been prohibited to sell by the Sales Chair
6. All plants must be priced in increments of one dollar (\$1.00), no .25, .50, etc.
7. Plants must be clean and free from disease, insects, etc. Sales Chair may ask you to clean or remove infected plants.
8. Twenty five percent (20%) of members' sale proceeds will be retained by CBS. Sales tax will be the responsibility of CBS.
9. CBS will not be responsible for loss of plants or craft items, however, all reasonable precautions will be taken to insure their safety.
10. Bromeliad oriented items (art, note paper, carvings, needlework, food, crafts, etc.) may also be offered for sale, subject to the preceding rules. These items should be labeled the same as plants, following rule #4.
11. Vendors and Volunteers are the face of the Caloosahatchee Bromeliad Society during this event. Please be cordial and helpful to buyers and other vendors. Should a disagreement or problem arise, bring it to the attention of the Sales Chairpersons or their representatives for help in resolving it.
12. Take Down - Screens in the case where they are used as a barrier may be removed 15-30 minutes before the close of the sale on Sunday. You may organize & clean up your area in preparation for closing but please do not remove sale plants prior to the closing time.
13. All transactions that occur, even between vendors, on the grounds of the Edison/ Ford Estates that involve exchange of money, must go through the CBS cashiers and are subject to the 20% of the charges retained by the CBS.
14. During a Show year, the Sales area will be open to Judges and Show volunteers during special times on Friday afternoon. Arrangements will be made to allow for check-out, since the regular cashiers will not be available.

Holiday Party– December 17th 2023. If this notice sounds like a feeling of déjà vu, you are not far off. Debbie McPhail has graciously volunteered her home and gardens for our December Holiday Party again. The format will be the same as in years past. great food, plenty of cheer, overflowing raffle and Debbie's spectacular yard as the venue is sure to make for a remember- able event following our Show and Sale.

Debbie McPhail

3596 McGregor Blvd Fort Myers 33901

Deb.mcphail@yahoo.com 239-332-4607

Debbie's home is across the street from the Fort Myers Country Club and the Edison Grill. Her house is at the corner of McGregor and Shadow Lane. Parking is permitted further down Shadow Lane and at the Country Club across the street. Please be courteous to her neighbors when parking.

Members are asked to bring a favorite pot luck dish to share, such as casseroles, vegetables with dip, little sandwiches, cakes, cookies and about anything else that is edible. CBS supplies the paper and plastic goods, some beverages and a meat entree. If you prefer other cold drinks, bring your own, there will be plenty of ice. **Debbie has sitting for over 50 people, but if you want you can still bring your own chairs.**

Try to arrive around noon with your goodies so that the tables can be arranged buffet style. For those of you that cannot get there early, don't worry it is always closer to 1PM or later that we start to eat and the festivities begin.

After lunch there will be a raffle of bromeliad plants and items brought by members as gifts (no, you don't have to wrap and ribbon them). But, they should be nice, clean bromeliads or bromeliad related items that anyone would want to win. **Donations of other plant families such as orchids, ferns, fruit trees, native plants, etc. are also acceptable.** We are a diverse

group of growers, who enjoy many different plants, so if you have extras of other types of plants donate them to our special holiday raffle. Tickets are still 3/\$1, so buy a lot. Friendship Plants are also welcome... these are those extra plants from your garden that might be of value to other members. These freebies are always appreciated. **But please, please...make sure you spray your plants or wash them very well...we don't want any members to bring diseases back to their collection or into Debbie's garden.**

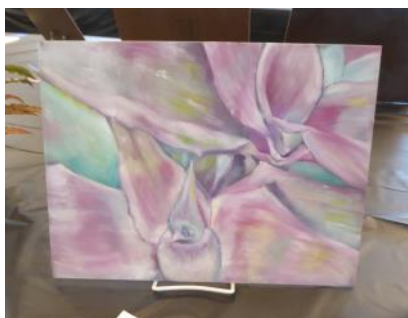
Hopefully the party committee will be planning games and contests as usual. When available we'll be mentioning the type of contests in upcoming memos before the party.

New members or anyone that needs more information, contact your Editor (Larry Giroux) at 239-850-4048 or your host. Bring your significant other, friends and relatives and expose them to our hobby, while enjoying the hospitality of our society.



Artistic Entries By Larry Giroux

The reason I was not at the October CBS meeting was because I was Judging and chairing a Show Committee at the SWBG and the International Cryptanthus Society Shows. I was asked to judge Artistic Entries. Although the majority of entries in bromeliad shows are horticultural, the founders of Bromeliad Shows, recognized that many bromeliad enthusiasts enjoy their plants and the hobby in other ways. Artistic Arrangements and Decorative Container Divisions were added for this reason. artistic creation entries were also added to the Schedule to allow hobbyists to show how bromeliads are incorporated into the home in decorative media. If you enjoy bromeliads in the garden or patio and you also enjoy other artistic endeavors such as painting, photography, quilting or sculpture, we encourage you to enter these original creations featuring bromeliads, in our show. Pictured here are some paintings done by Mary Cinotto that she exhibited at the Houston Shows.



Minutes of the CBS General Meeting

LC/FM Garden Council Building September 17th 2023

Call to order: 1:20PM by Vice-President Dale Kammerlohr

Guest: Lucinda Richie

In Attendance: 38

Announcements: Dr Larry Giroux informed the members that we will be using a tent for the Bromeliad Show at this year's Show and Sale; that we will need volunteers starting about 1 PM Thursday to move tables and chairs from various locations at Edison and set up the cashier areas. He stated that Show entries will be accepted starting at 8AM Friday; he encouraged vendors to bring their entries early Friday. Brian Weber requested that vendors plan on setting up their tents and plants at 10AM on Friday.

Dale Kammerlohr introduced the Nominations Committee for next year's Officers: Chris Buntin, and that the new slate of Officers up for election will remain unchanged next year. The election will be in November. If anyone wishes to run against the incumbents, please contact Julie Stein.

Betsy Burdette distributed Show and Sale signs and will make them available at the next meeting also. She encourages members to bring in any old signs for updating and reuse.

Workshop: Rick Batt was unable to give his presentation about *Dyckias* at this meeting. Dr Larry Giroux filled in and gave a synopsis of the Genus: *Dyckia*. Explaining their history, cultural requirements and unique features. Unfortunately, no specimens were available for the demonstration. He encouraged members to come up and look at the several articles he had laid out on the front table. He made the distinction between *Dyckias* and *Hechtias* based on their natural habitats, flower color, spike formation and required culture.

Program: CBS member Terrie Bert presented the program: "Growing Beautiful Bromeliads in South Florida" with numerous live plants from a variety of Genera. She explained that it is unfortunate that there really hasn't been anyone since the passing of Harry Luther, who is an active neoregelia taxonomist. There are now numerous mini and full size neos, which have not been described. Terrie defined a "type" plant as a descendant of the original wild collected specimen. If you acquire a "type" plant, it is important to keep all the information on subsequent tags. Keeping the Selby numbers on plants is an example of how important this is. Also, keep all the info you got when you received the plant on any new labels. Terrie also reviewed the proper way

to label species, cultivars and hybrids. In the last few years, the use of single quotes has been restricted to ‘Cultivars’ only. Hybrids should not use single quotes! Genus should be capitalized, and species names should begin with a small letter, both italicized. There are several “keystone” species that other animal and insect species rely on for survival. With the loss of these crucial bromeliad species, such as certain *Hohenbergia* species, detrimental effects on many other species may occur. Terrie included several other Genera in her program including *Aechmea* (particularly the numerous forms of *nudicaulis* and *orlandiana*), succulent like bromeliad Genera including *Dyckia*, *Hechtia*, *Encholirium*, *Deuterocohnia*, *Orthophytum* and *Nidularium* among others.

Door Prizes: A billbergia and guzmania taken from the raffle table and a donated mature *Tillandsia novakii* were won as Door Prizes. Thank you to the donors.

Show & Tell: Besides discussing several plants brought in by members, Dale Kammerlohr showed us a collection of some of his hybrids he has made with *Aechmea orlandiana* like plants. Some interesting leaf patterns were produced by these crosses.

Raffle: Larry Giroux, Luli Westra and Betsy Burdette awarded about 12 donated plants to the lucky winners.

Meeting adjourned: 3:55 PM,

Respectfully submitted by Dr Larry Giroux

**Minutes of the CBS General Meeting
LC/FM Garden Council Building Oct 15th 2023**

Call to order: 1:14 by President Julie Stein

Guests: Lacinda Ritchie and David Sand

In Attendance: 36

Announcements: President Julie Stein announced the slate of officers nominated to serve next year: President – Julie Stein; Vice-President – Dale Kammerlohr; Secretary – Alison Ackerman; Treasurer – Betty Ann Prevatt. There were no other nominations from the floor; the election will take place at next month’s general meeting. The Garden Council has organized a bus trip to Homestead and Fairchild Gardens on Oct. 28 for \$75 a person. Anyone interested can contact the Council.

Next year’s Strolling Flower Show, titled “Where the Desert Meets the Sea”, will be held in downtown Ft. Myers at the Sydney & Berne David Art Center on Feb. 14 from 10:00 – 4:00.

The annual Bonsai Show and Sale, along with workshops and demonstrations will be held here at the Garden Center on Nov. 4 and 5. This event is highly recommended by members who have attended in the past. Betty Ann Prevatt reminded everyone of our upcoming show and sale, slated for Dec 1 through Dec. 3. Flyers are now available for members to take and display around the community. This year we will be renting a large tent for our show and putting it up near the cashier area. This will mean we can more easily take care of our show plants, plus more people from the public will be able to view and enjoy them. Next month our workshop will focus on how best to prepare plants to enter into this show. There will also be a Membership Table, in case anyone wants to sell a few plants. For more details about this event, members should refer to the Sept-Oct 2023 Meristem newsletter.

Workshop: Dr. Rick Batt, longtime CBS member presented informative slides and a handout on *Dyckias*, plus *Encholiriums*, *Hechtias*, and *Deuterocohnias*. He said they are all terrestrials that love the sun and can go without water for a time. When they flower, they don't die off like so many other bromeliads - they will actually flower the following year, and also put out offsets. His favorite soil mix for these bromeliads is a combination of top soil and perlite with some osmocote as well. While most have spines, *Hechtia tillandsioides* have none.

Program: Ray Lemieux, an avid plant collector for over 30 years, gave a rousing talk on terrestrial bromeliads – how to clean them up, divide them, repot them, and even propagate them. He brought *Dyckias*, *Hechtias*, *Encholiriums*, *Ortho-phytums* and others and discussed their growing requirements such as soil mixes, plus light, soil and watering requirements. He also has created many hybrids over the years, such as *XDyckohnia Cherry Bomb*, *XEnchotia Ruby*, and *XPitcohnia* among others.

Door Prizes: Debbie McPhail brought 2 *Dyckia fragans* plants for our door prizes.

Show & Tell: Dale Kammerlohr showed and discussed several beautiful plants brought in by members.

Raffle: Dale and Julie awarded about 15 donated plants to the lucky winners.

Meeting adjourned: 3:35

Respectfully submitted by Alison Ackerman



Dr. Larry Giroux, Editor
80 Skyline Drive
North Fort Myers FL 33903
(239) 850-4048 DrLarry7@gmail.com



This nearly perfect blooming, very fragrant, *Tillandsia duratii*, won the Best of Show in the Southwest Bromeliad Guild Show in Houston Texas by Mich Fontenot



This is your Nov-Dec 2023 CBS Newsletter